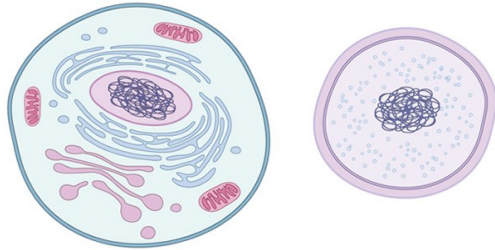


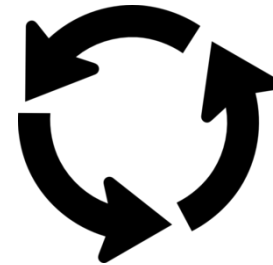
Cell

The smallest working part of a living thing



Circulate

To move along a path that returns to the place it started



Examine

To look very closely at something



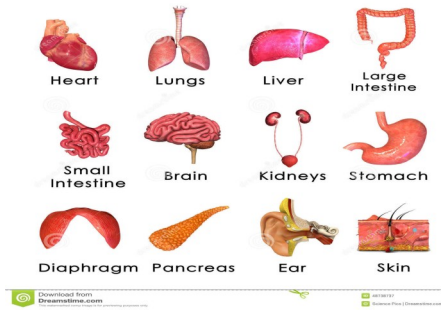
Involve

To be part of something



Organ

A body part that has a certain job to do



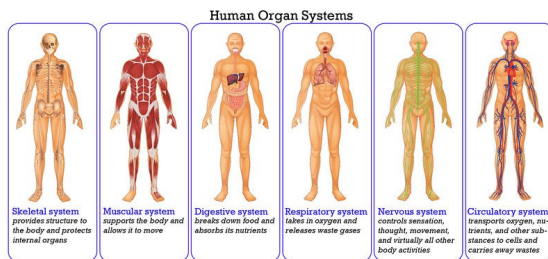
Oxygen

The air we breathe



System

A group of parts that work together to do a job



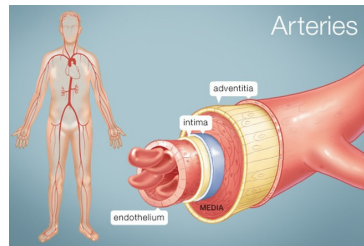
Vessel

A tube through which liquid travels in a living thing



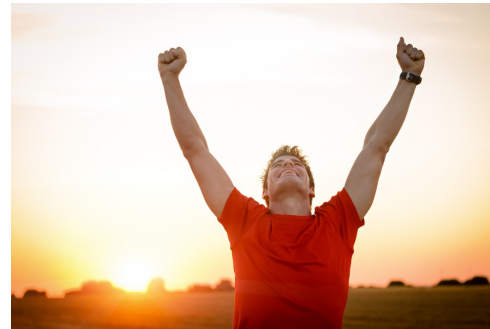
Artery

A blood vessel that goes away from the heart



Healthy

Not sick



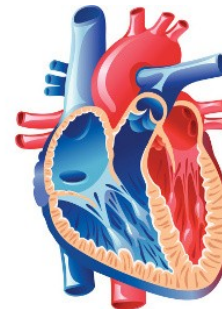
Muscle

An organ that gives you strength to move



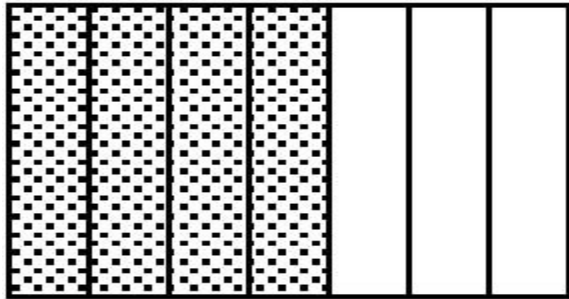
Pump

push liquid from one place to another



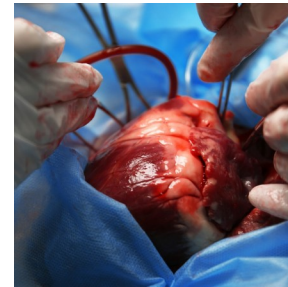
Section

One part of something



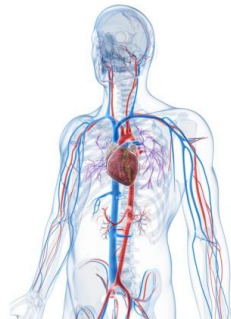
Transplant

Something taken from one place to another



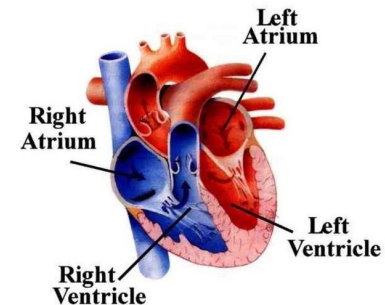
Vein

A blood vessel going to the heart



Ventricle

Lower area of the heart



Accept

To admit something is true



Assignment

A task or job you must do



Clueless

To be confused or not know something



Determined

Try very hard to do something



www.WinchesterArt.ca

Disaster

A very bad event



Glory

A moment of great success



Realize

To understand something



Survive

To get through something difficult

